

cherokee®





4727
V-Neck Top
XXS-5XL (27")

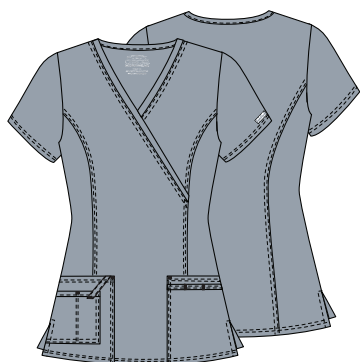
Fabric
55 Cotton/42 Poly/
3 Spandex Twill

Product Details

- Modern Classic fit
- Crossover front yoke
- Two patch pockets
- Right sectional pocket with ID loop
- Back yoke and princess seams
- Side vents

Available Colors

| | | | | |
|------|------|------|------|------|
| NAVW | BLKW | PWTW | ROYW | CIEW |
| WINW | WHTW | CARW | TLBW | HUNW |
| GRPW | KAKW | GABW | TRQW | EGGW |
| GRYW | REDW | SHPW | OLVW | CHCW |
| FTP | | | | |



4728
Mock Wrap Top
XXS-5XL (27")

Fabric
55 Cotton/42 Poly/
3 Spandex Twill

Product Details

- Modern Classic fit
- Two patch pockets
- Right sectional pocket with ID loop
- Instrument loop
- Front and back princess seams
- Double-needle topstitching
- Side vents

Available Colors

| | | | | |
|------|------|------|------|------|
| NAVW | BLKW | PWTW | ROYW | CIEW |
| WINW | WHTW | CARW | TLBW | HUNW |
| GRPW | KAKW | GABW | TRQW | EGGW |
| GRYW | REDW | SHPW | OLVW | CHCW |
| FTP | | | | |

4728



4727



**AUTHENTIC
CHEROKEE
WORKWEAR**

CORE STRETCH



MOCK WRAP TOP **NEW COLORS**

4728

XXS-5XL 55 Cotton / 42
Poly / 3 Spandex Twill

A mock wrap top features front princess seams and double-needle topstitch detail. Also included are front patch pockets, a right side pocket with I.D. loop and a left side pocket with an instrument loop holder across pocket. Back princess seams and side vents complete the picture. Center back length: 27"

Shown in: Pumpkin



See all sizes and colors on
pages 36-37.

V-NECK TOP **NEW COLOR**

4727

XXS-5XL 55 Cotton / 42
Poly / 3 Spandex Twill

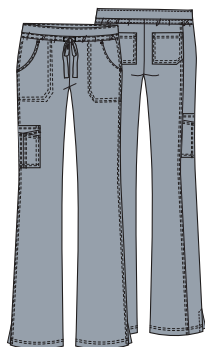
A V-neck top features crossover front yokes and patch pockets. The right side pocket has a sectional pocket with I.D. loop, while the left side has an instrument loop holder across the pocket. A back yoke, back princess seams and side vents complete the picture. Center back length: 27"

Shown in: Poppy



See all sizes and colors on
pages 36-37.





24001/P/T Low Rise Drawstring Cargo Pant

XXS-3XL (31")
[P] XXS-2XL (28½")
[T] XS-2XL (34")

Fabric
 55 Cotton/42 Poly/
 3 Spandex Twill

Product Details

- Contemporary fit
- Elastic knit waistband
- Front and back patch pockets
- Sectional cargo pocket
- Double-needle topstitching
- Side vents
- Flare leg
- Leg opening: 20½"

Available Colors

| | | | | |
|--------|--------|--------|--------|-------|
| NAVW | BLKW | PWTW | ROYW | CIEW |
| WINW | WHTW | CARW* | TLBW | HUNW* |
| GRPW* | KAKW*† | GABW* | TRQW*† | EGGW* |
| GRYW*† | REDW*† | SHPW*† | FTP† | |

* No Tall † Black Waistband

UNISEX STYLES



4725 Unisex V-Neck Top

XS-5XL (28")

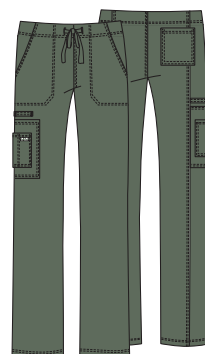
Fabric
 55 Cotton/42 Poly/
 3 Spandex Twill

Product Details

- Unisex fit
- Chest pocket with instrument holder
- Two patch pockets
- Cellphone/instrument pocket
- Back yoke and side vents

Available Colors

| | | | | |
|------|------|------|------|------|
| NAVW | BLKW | PWTW | ROYW | CIEW |
| WINW | WHTW | CARW | TLBW | HUNW |
| GRPW | KAKW | GABW | EGGW | GRYW |
| REDW | OLVW | | | |



4043 Unisex Drawstring Cargo Pant

XS-5XL (31")

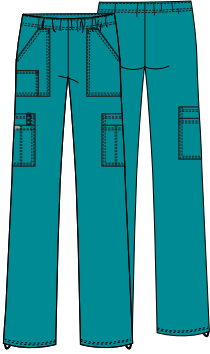
Fabric
 55 Cotton/42 Poly/
 3 Spandex Twill

Product Details

- Unisex fit
- Five pockets: slash pockets, cargo pocket, cellphone pocket, back pocket
- Elastic waistband
- Instrument loop
- Straight leg
- Leg opening: 20½"

Available Colors

| | | | | |
|------|------|------|------|------|
| NAVW | BLKW | PWTW | ROYW | CIEW |
| WINW | WHTW | CARW | TLBW | HUNW |
| GRPW | KAKW | GABW | EGGW | GRYW |
| REDW | OLVW | | | |



4005/P/T Mid Rise Pull-on Cargo Pant

XXS-5XL (31")
[P] XXS-2XL (28½")
[T] XS-2XL (34")

Fabric
55 Cotton/42 Poly/
3 Spandex Twill

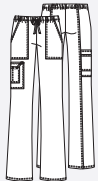
Product Details

- Modern Classic fit
- Elastic waistband
- Seven pockets: front patch pockets, small right patch pocket, double cargo pockets
- ID loop on right cargo pocket
- Adjustable bungee at leg opening
- Straight leg
- Leg opening: 19½"

Available Colors

| | | | | |
|-------|-------|-------|-------|-------|
| NAVW | BLKW | PWTW | ROYW | CIEW |
| WINW | WHTW | CARW | TLBW* | HUNW |
| GRPW* | KAKW | GABW* | TRQW* | EGGW* |
| GRYW* | REDW* | SHPW* | CHCW* | FTP |

* No Tall



4044/P/T Mid Rise Drawstring Cargo Pant

XXS-5XL (31")
[P] XXS-2XL (28½")
[T] XS-2XL (34")

Fabric
55 Cotton/42 Poly/
3 Spandex Twill

Product Details

- Modern Classic fit
- Front patch pockets
- Sectional pocket with ID loop on cargo pocket
- Elastic waistband
- Flare leg with seams on back leg
- Leg opening: 20½"
- Shown in Fruit Punch (FTP)

Available Colors

| | | | | |
|------|------|------|------|------|
| NAVW | BLKW | PWTW | ROYW | CIEW |
| WINW | WHTW | CARW | TLBW | HUNW |
| GRPW | KAKW | GABW | TRQW | EGGW |
| GRYW | REDW | SHPW | OLVW | CHCW |
| FTP | | | | |

3





MID-RISE PULL-ON CARGO PANT NEW COLOR

4005

XXS-5XL 55 Cotton /
42 Poly / 3 Spandex Twill

A mid-rise, straight leg pant features a soft elastic inside waistband, front patch pockets and an additional small right patch pocket. Also featured are double cargo side pockets with an instrument loop and a bungee cord with a clear toggle at the leg hems for adjustability. Inseam length: 31"

Shown in: Poppy



See all sizes and colors on
pages 36-37.



MID-RISE DRAWSTRING CARGO PANT NEW COLORS

4044

XXS-5XL 55 Cotton /
42 Poly / 3 Spandex Twill

A mid-rise, flare leg, drawstring pant with an elastic waist features front patch pockets, a right side cargo pocket with an extra instrument/cell phone pocket, an I.D. loop and a back leg seam. Inseam: 31

Shown in: Pumpkin



See all sizes and colors on
pages 36-37.



24001



UNISEX V-NECK TOP

4725

XS-5XL 55 Cotton / 42 Poly / 3 Spandex Twill

A Unisex V-neck features double-needle stitching. The chest pocket features an instrument holder. Also included are two patch pockets, an additional instrument/cell phone pocket on right side, back yoke and side vents. Center back length: 28"

Shown in: Olive



See all sizes and colors on pages 36-37.



UNISEX DRAWSTRING CARGO PANT

4043

XS-5XL 55 Cotton / 42 Poly / 3 Spandex Twill

A Unisex cargo pant sports a natural rise and an adjustable drawstring with an elastic waist. Included are five pockets: Two slash front pockets, a right side cargo pocket with an instrument loop, an extra instrument/cell phone pocket, a back pocket and back leg seam. Inseam: 31"

Shown in: Olive

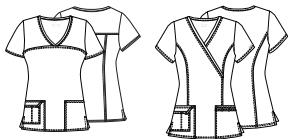


See all sizes and colors on pages 36-37.

** DISPONIBILITÉ DES COULEURS PEUVENT VARIER

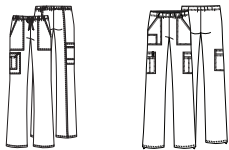
COLOR and
STYLE MATRIX
Colors listed in order
of popularity.

Styles and colors featured
are reorderable and Cotton/
Poly/Spandex Twill.
Center back lengths
and inseams are listed
in parentheses.



4727
V-Neck
Top
XXS-5XL
(27")

4728
Mock Wrap
Top
XXS-5XL
(27")



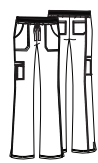
4044/P/T
Mid Rise
Drawstring
Cargo Pant
XXS-5XL (31")
[P] XXS-2XL
(28½")
[T] XS-2XL (34")

4005/P/T
Mid Rise
Pull-on
Cargo Pant
XXS-5XL (31")
[P] XXS-2XL
(28½")
[T] XS-2XL (34")

| | WOMEN'S TOPS | | | | | | WOMEN'S PANTS | |
|-----------------------|--------------|--|-----------------------------------|-----------------------------------|-----------------------------------|-----------------------------------|---------------|-----------------------------------|
| Black (BLKW) | | | | | | | | |
| Navy (NAVW) | | | | | | | | |
| Pewter (PWTW) | | | | | | | | |
| Royal (ROYW) | | | | | | | | |
| Ciel (CIEW) | | | | | | | | |
| Wine (WINW) | | | | | | | | |
| Caribbean Blue (CARW) | | | | | | | | |
| White (WHTW) | | | | | | | | |
| Teal Blue (TLBW) | | | | | | | | No Tall |
| Hunter (HUNW) | | | | | | style not available in this color | | |
| Grey (GRYW) | | | | style not available in this color | style not available in this color | | | No Tall |
| Galaxy Blue (GABW) | | | | | | style not available in this color | | No Tall |
| Khaki (KAKW) | | | | | | style not available in this color | | |
| Grape (GRPW) | | | | | style not available in this color | style not available in this color | | No Tall |
| Eggplant (EGGW) | | | | | | style not available in this color | | No Tall |
| Red (REDW) | | | style not available in this color | | | style not available in this color | | No Tall |
| Turquoise (TRQW) | | | style not available in this color | | | style not available in this color | | No Tall |
| Olive (OLVW) | | | style not available in this color | style not available in this color | style not available in this color | style not available in this color | | style not available in this color |
| Shocking Pink (SHPW) | | | style not available in this color | style not available in this color | | style not available in this color | | No Tall |
| Chocolate (CHCW) | | | style not available in this color | style not available in this color | style not available in this color | style not available in this color | | No Tall |
| Fruit Punch (FTP) | | | style not available in this color | | style not available in this color | style not available in this color | | |

F = Fashion (available while supplies last)

** DISPONIBILITÉ DES COULEURS PEUVENT VARIER



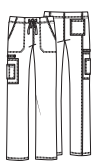
24001/P/T
Low Rise
Drawstring
Cargo Pant

XXS-3XL (31")
[P] XXS-2XL
(28½")
[T] XS-2XL (34")



4725
V-Neck
Top

XS-5XL
(28")



4043
Drawstring
Cargo Pant

XS-5XL
(31")







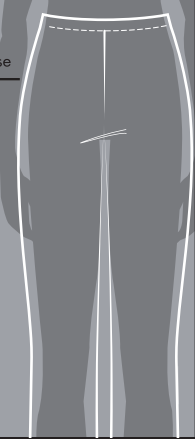
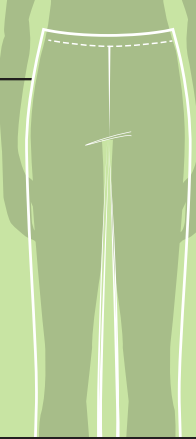
4743
V-Neck
Top

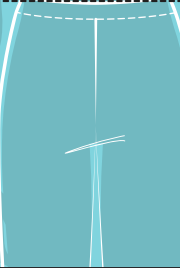
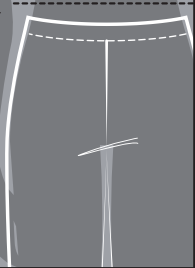
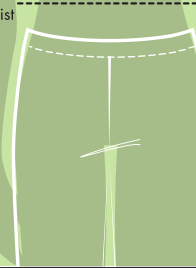
XS-5XL
(29")

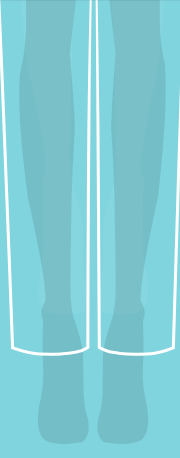

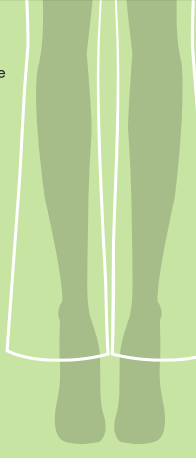
| WOMEN'S PANTS | | | UNISEX STYLES | | MEN'S STYLES | | | |
|-----------------------------------|-----------------------------------|-----------------------------------|-----------------------------------|-----------------------------------|-----------------------------------|-----------------------------------|-----------------------------------|-----------------------------------|
| | | | | | | | | |
| | | | | | | | | |
| | | | | | | | | |
| | | | | | | | | |
| | | | | | | | style not available in this color | style not available in this color |
| | | | | | | | style not available in this color | style not available in this color |
| No Tall | | | | | | | style not available in this color | style not available in this color |
| | | | | | | | style not available in this color | style not available in this color |
| | F | | | | | | style not available in this color | style not available in this color |
| No Tall | F | style not available in this color | | | | | style not available in this color | style not available in this color |
| Black Waistband, No Tall | style not available in this color | | | | style not available in this color | style not available in this color | style not available in this color | style not available in this color |
| No Tall | F | style not available in this color | | | | | style not available in this color | style not available in this color |
| Black Waistband, No Tall | F | style not available in this color | | | | | style not available in this color | style not available in this color |
| No Tall | F | style not available in this color | | | style not available in this color | style not available in this color | style not available in this color | style not available in this color |
| No Tall | | style not available in this color | | | style not available in this color | style not available in this color | style not available in this color | style not available in this color |
| Black Waistband, No Tall | F | style not available in this color | | | style not available in this color | style not available in this color | style not available in this color | style not available in this color |
| Black Waistband, No Tall | F | style not available in this color | style not available in this color | style not available in this color | style not available in this color | style not available in this color | style not available in this color | style not available in this color |
| style not available in this color | style not available in this color | style not available in this color | | | | | style not available in this color | style not available in this color |
| Black Waistband, No Tall | style not available in this color | style not available in this color | style not available in this color | style not available in this color | style not available in this color | style not available in this color | style not available in this color | style not available in this color |
| style not available in this color | style not available in this color | style not available in this color | style not available in this color | style not available in this color | style not available in this color | style not available in this color | style not available in this color | style not available in this color |
| Black Waistband | style not available in this color | style not available in this color | style not available in this color | style not available in this color | style not available in this color | style not available in this color | style not available in this color | style not available in this color |

GARMENT FIT GUIDE

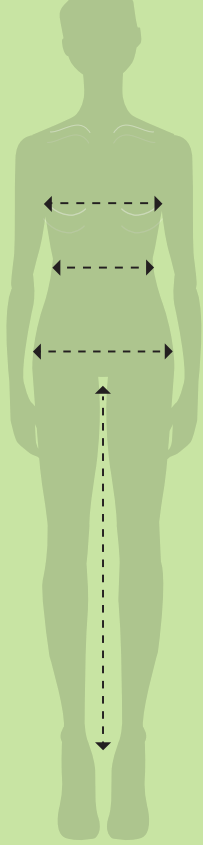
| TRADITIONAL CLASSIC | MODERN CLASSIC | CONTEMPORARY |
|---|---|---|
| Generously cut for maximum comfort | Contours the body with ease | Contoured to your curves |
|  |  |  |

| TRADITIONAL CLASSIC | MODERN CLASSIC | CONTEMPORARY |
|--|--|--|
| Generously cut for maximum comfort | Contours the body with ease | Contoured to your curves |
| Rises and leg shape vary by style. | Rises and leg shape vary by style. | Rises and leg shape vary by style. |
|  |  |  |

| PANT WAIST FIT GUIDE | | |
|---|---|---|
| NATURAL | MID RISE | LOW RISE |
| At the waist or slightly above | Slightly below the waist | Below the waist |
|  |  |  |

| PANT LEG FIT GUIDE | | |
|---|---|---|
| STRAIGHT | MODERATE FLARE BOOT CUT | FLARE |
| Falls straight from the knee to leg opening | Widens slightly from the knee to leg opening | Flares from the knee to leg opening |
|  |  |  |

WOMEN'S MEASURING GUIDE



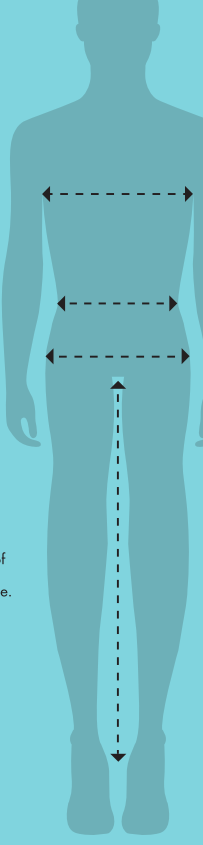
BUST
Measure under arms around the fullest part of the bust.

WAIST
Measure under the natural waistline, loosely holding the tape measure.

HIPS
Standing with feet together, measure around the fullest part of the hips.

INSEAM
Measure along the inside of the leg, from just below the crotch to 1" below the ankle.

MEN'S MEASURING GUIDE



CHEST
Measure under arms around the fullest part of the chest.

WAIST
Measure under the natural waistline, loosely holding the tape measure.

HIPS
Standing with feet together, measure around the fullest part of the hips.

INSEAM
Measure along the inside of the leg, from just below the crotch to 1" below the ankle.

Kids

| Size | S | M | L |
|--------|--------|-------|-----------|
| Age | 2-5 | 6-8 | 9-11 |
| Chest | 23-25 | 26-29 | 30-32 1/2 |
| Waist | 21-23 | 24-27 | 28-30 1/2 |
| Hip | 23-25 | 26-29 | 30-32 1/2 |
| Inseam | 14 1/2 | 19 | 23 |

Traditional Classic Fit/Modern Classic Fit/Contemporary Fit/Maternity

| Women's | XXS | XS | S | M | L | XL | 2XL | 3XL | 4XL | 5XL |
|---------|----------------|-------|-----------------------|-------|-------------|-------|-------|-------|-------|-------|
| | 0 | 2-4 | 6-8 | 10-12 | 14-16 | 18-20 | 22-24 | 26-28 | 30-32 | 34-36 |
| Bust | 31-32 | 33-34 | 35-36 | 37-39 | 40-43 | 44-47 | 48-51 | 52-55 | 56-59 | 60-63 |
| Waist | 23-24 | 25-26 | 27-28 | 29-31 | 32-35 | 36-39 | 40-43 | 44-47 | 48-51 | 52-55 |
| Hip | 33-34 | 35-36 | 37-38 | 39-41 | 42-45 | 46-49 | 50-53 | 54-57 | 58-62 | 63-67 |
| Inseam | Regular: 30-31 | | Petite: 27 1/2-28 1/2 | | Tall: 33-34 | | | | | |

Men's and Unisex Size Chart

| Men's/Unisex | XXS | XS | S | M | L | XL | 2XL | 3XL | 4XL | 5XL |
|--------------|----------------|-------|--------------|-------|-------------|-------|---------------------------|-------|-------|-------|
| Bust | 29-31 | 32-34 | 35-37 | 38-40 | 41-44 | 45-48 | 49-52 | 53-56 | 57-60 | 61-64 |
| Waist | 22-24 | 25-27 | 28-30 | 31-33 | 34-37 | 38-41 | 42-45 | 46-49 | 50-53 | 54-57 |
| Hip | 29-31 | 32-34 | 35-37 | 38-40 | 41-44 | 45-48 | 49-52 | 53-56 | 57-60 | 61-64 |
| Inseam | Regular: 31-32 | | Short: 29-30 | | Tall: 34-35 | | Ultra Tall (unhemmed): 36 | | | |

Use this chart to determine your size. If one of your measurements is between two sizes, order the smaller size for a tighter fit or the larger size for a looser fit. If your measurements for hips and waist correspond to two different suggested sizes, order the one indicated by your hip measurement.