





Style: 324T

Flexi V-Neck Scrub Top

Colors/Patterns:



Size



Details

Flexi V-Neck Scrub Top

The original MOBB Flexi features our classic v-neck collar and stretch side panels. This top has two lower hidden pockets and one shoulder pen pocket. This top is available in both prints and solids.

Limited Availability: New Navy





Style: 524T

Ultra Flexi Scrub Top

Colors/Patterns:



Aqua



Black



Charcoal



Deep
Orchid



Navy



Sky Blue

Size

XXS	XS	S	M	L	XL	2XL
-----	----	---	---	---	----	-----

Details

Ultra Flexi Scrub Top

The Ultra Flexi scrub top has multiple black stretch panels for the most superb fit and ultimate movement. The Ultra Flexi v-neck top also has two lower pockets and one shoulder pen pocket.

Limited Availability: Sky Blue





Style: 424T

Active Flexi V-Neck Scrub Top

Colors/Patterns:



Aqua



Charcoal



Eggplant



Indigo



Navy



Postman
Blue



Raspberry



White

Size

XXS

XS

S

M

L

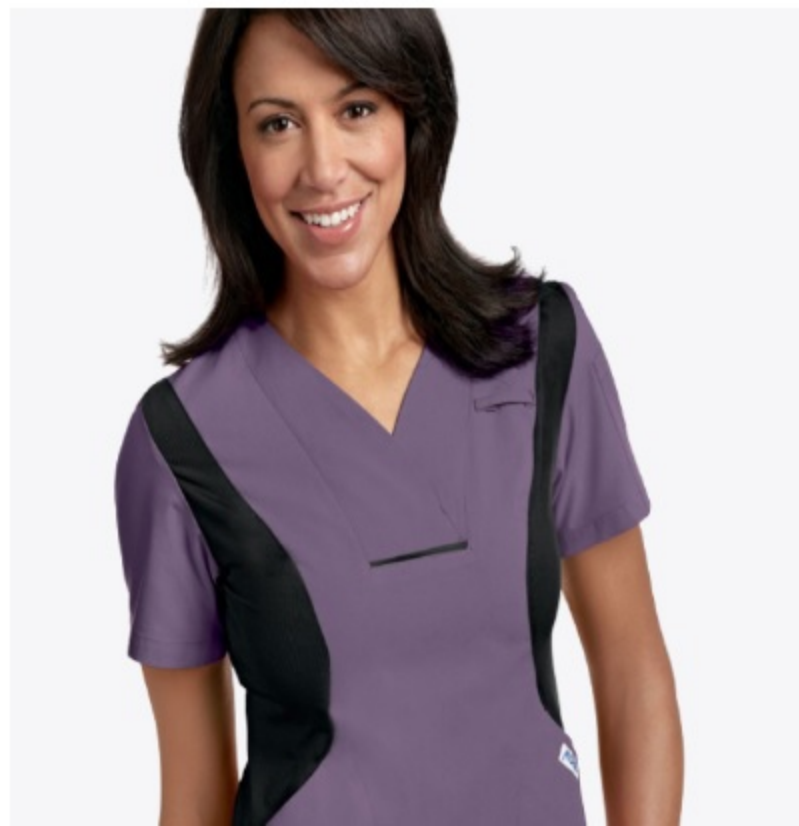
XL

2XL

Details

Active Flexi V-Neck Scrub Top

Comfortable and stylish this scrub top feels and looks amazing. The stretch panels create a fantastic fit and allow for great movement. The flexi v-neck has two lower pockets and one shoulder pen pocket





Style: 308T

3 Pocket V-neck Scrub Top

Colors/Patterns:



Aqua



Black



Burgundy



Caribbean



Ceil



Charcoal



Deep
Orchid



Eggplant



Khaki



Lagoon



Navy



Postman
Blue



Raspberry



Royal
Blue



Sky Blue



Spruce



White

Size

XXS

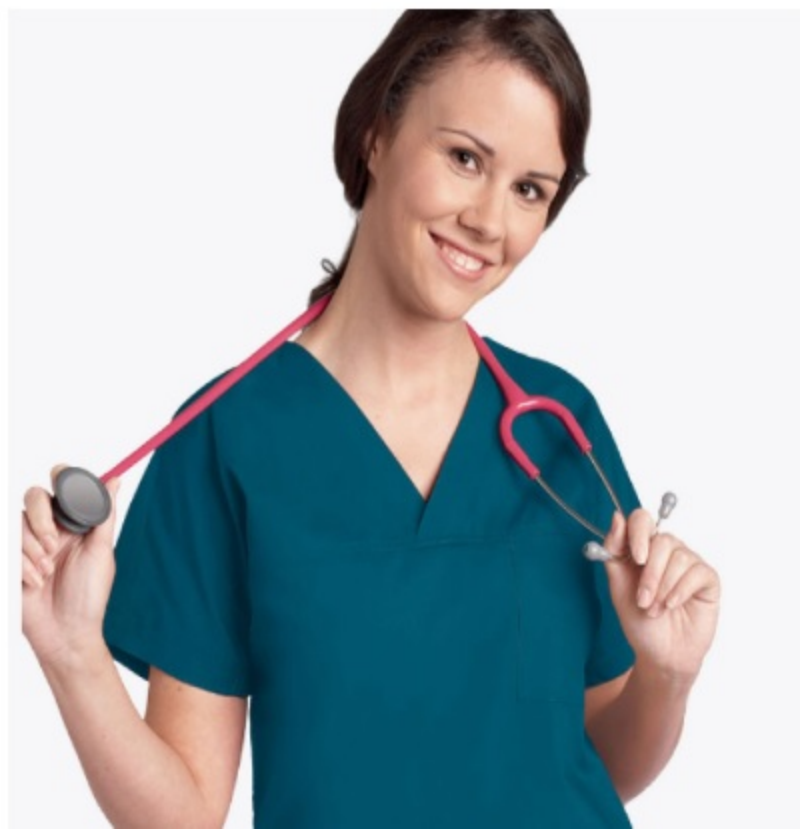
XS

S

M

L

XL



Details

3 Pocket V-Neck Scrub Top

A bold, basic 3 pocket v-neck scrub top featuring dolman sleeves.



Style: 310T

V-Neck UNISEX Scrub Top

Colors/Patterns:



Size



Details

V-Neck Unisex Scrub Top

A classic v-neck scrub top popular among men and women. This top has a slightly longer hem line making it an excellent choice for anyone with a taller stature. This top has three front pockets, one shoulder pen pocket and is available in every MOBB color

Size 5XL : Available Only In Black And Navy





Style: 409T

Men's Two Tone Scrub Top

Colors/Patterns:



Burgundy/Navy



Charcoal/Black



Khaki/Black



Postman
Blue/Navy

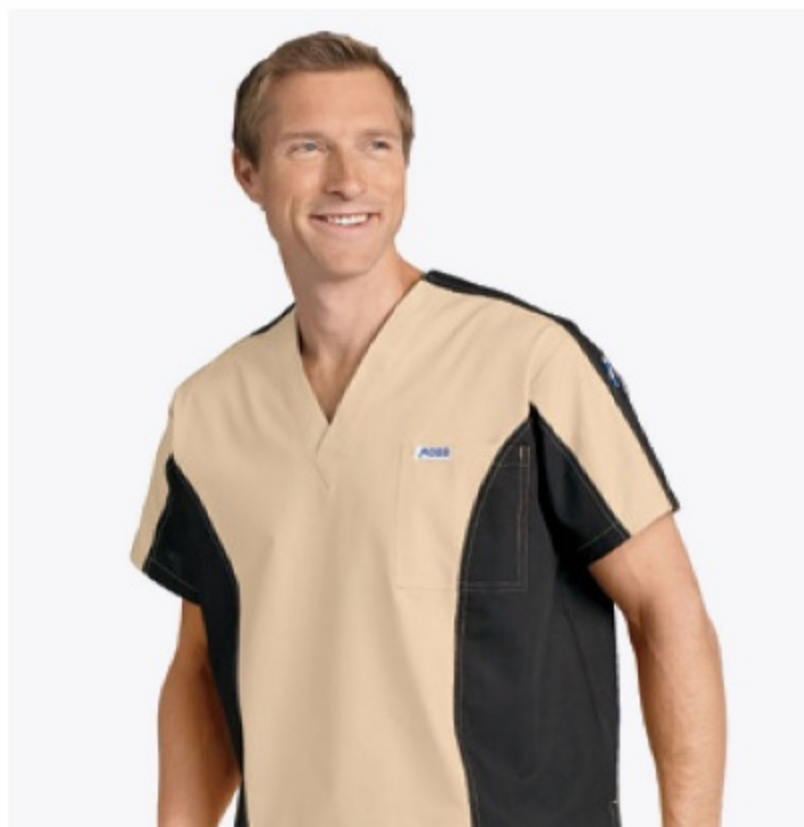
Size

XS	S	M	L	XL	2XL	3XL
----	---	---	---	----	-----	-----

Details

Men's Two Tone Scrub Top

Available in four color-ways this scrub top is becoming a favorite among men in the medical field. This two-tone scrub top has one chest pocket and one shoulder pen pocket.





Style: 307P

Unisex Drawstring/Elastic 5 Pocket Scrub Pant

This pant is available in every MOBB color. The unisex style is made to fit everyone looking for a sensible scrub pant. Features a combination drawstring and elastic waistband and a slim cut ankle.

Size



[View Size Chart](#)

Colors and Patterns





Style: 409P

Six Pocket Cargo Pant

Strong and versatile this pant is all business. Six pockets including two expandable side cargo pockets and a built in belt buckle

Available in the following lengths:

Regular Length(31" Inseam)

Tall Length(36" Inseam)

Size

XS

S

M

L

XL

2XL

3XL

[View Size Chart](#)

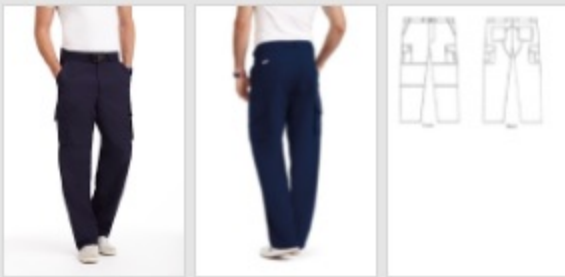
Colors and Patterns



Black



Navy



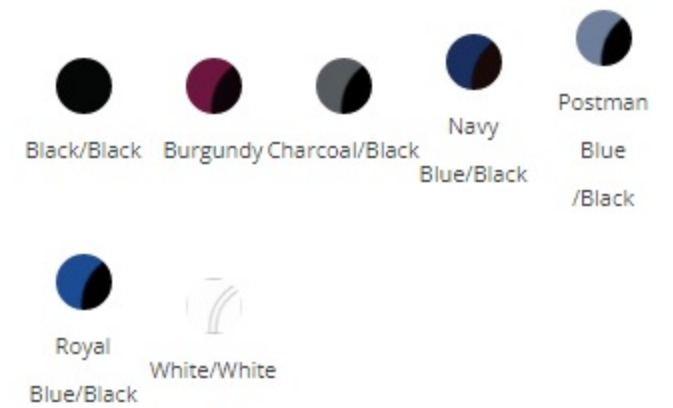
mentality
by **MOBB**



Style: T3020

The Pearl

Colors/Patterns:



Size



Details

The Pearl

Tailored for fit, this v-neck top features two flex side panels, one shoulder pen pocket and two lower patch pockets. One of the patch pockets includes detailed stitching on the outside with a utility D-ring and an inner smart phone pocket.

Stretch-Flex Blend: 65% Poly, 32% Rayon & 3% Spandex





Style: P3011

The Carmen

Colors/Patterns:



Black



Burgundy



Charcoal



Navy
Blue



Postman
Blue



Royal
Blue



White

Size

XXS

XS

S

M

L

XL

2XL

Details

The Carmen

Made for comfort, this straight leg pant is equipped with two front pockets, one back pocket and a cargo pocket with a utility D-ring. The combination drawstring/elastic waistband will ensure ultimate fit and comfort. The inner waistband features MOBB's signature logo.

Stretch-Flex Blend: 65% Poly, 32% Rayon & 3% Spandex





Style: P5011

The Linda

Colors/Patterns:



Black



Charcoal



Navy
Blue



Postman
Blue

Size

XXS	XS	S	M	L	XL	2XL
-----	----	---	---	---	----	-----

Details

The Linda

Our most comfortable pant yet! It features a super straight leg with two front pockets, two back pockets and a cargo pocket with a utility D-ring. With its yoga inspired design, it has a superbly comfortable flexi waist band with added drawstrings for a more secure fit.

***Stretch-Flex Fabric is made with 65% Poly, 32% Rayon & 3% Spandex ***

