



**MEDICAL**

2021

# REORDERABLE PRODUCT GUIDE





DK875

# BALANCE



## DK155/P/T

Mid Rise Jogger  
XXS-5XL (29")  
[P] XXS-2XL  
(26½")  
[T] XS-2XL (32")

## DK875

V-Neck Top  
With Rib-Knit  
Panels  
XXS-5XL (26")

Black  
Navy  
Pewter  
Wine  
Ciel Blue  
Royal  
Caribbean Blue  
Hunter  
White  
Teal Blue  
Eggplant  
Galaxy Blue  
Frozen Grape\*  
Deep Forest\*  
**New! Chilled Berry\***

BLK		
NAV		
PWT		
WIN		
CIE		
ROY		
CAR		
HUN		
WHT	style not available in this color	
TLB	style not available in this color	
EGG	style not available in this color	
GAB	style not available in this color	
FZGR*	(XL-3XL) No Tall	XS-3XL
DFOT*	(XL-3XL) No Tall	XS-3XL
CLBY*	style not available in this color	XS-3XL





DK155



# BALANCE



DK840

Mock Wrap Top  
XXS-5XL (26")

Black

Navy

Pewter

Wine

Ciel Blue

Royal

Caribbean Blue

Hunter

White

Teal Blue

Eggplant

Galaxy Blue

Frozen Grape\*

Deep Forest\*

**New!** Chilled Berry\*

BLK

NAV

PWT

WIN

CIE

ROY

CAR

HUN

WHT

TLB

EGG

GAB

FZGR\*

DFOT\*

CLBY\*

style not available  
in this color

style not available  
in this color

style not available  
in this color

style not available  
in this color

style not available  
in this color

style not available  
in this color





DK840



BREATHABLE,  
LIGHTWEIGHT,  
4-WAY STRETCH

Multi-stretch, moisture-wicking fabric keeps the focus on your work and not your wardrobe.



DK615  
V-Neck Top  
XXS-5XL (26")

- Contemporary fit
- Shoulder yokes
- Instrument loops with snap at right shoulder
- Two patch pockets
- Pen slot with utility twill tape
- Instrument loops inside left pocket
- Signature tonal woven label
- Signature logo twill tape at the back neck
- Side vents

Fabric:  
95 Poly/5 Spandex Poplin

NEW this season:

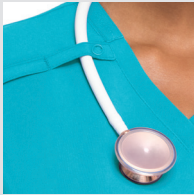
EGG	GRY	PAPC
-----	-----	------

Available Colors:

BAPS†	CAPS†	CIPS†	ESP
GAB	GRP	HNPS	HPKZ
NYPS†	PWPS†	RED	RYPS†
TLPS	TRQ	WNPS†	WTPS†

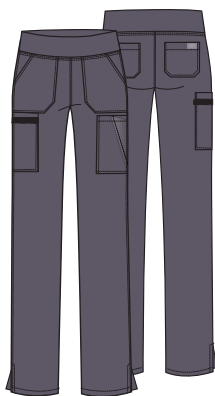
† Available in 6XL

DK615  
V-Neck Top shown  
in Papaya Punch  
(PAPC)



Instrument loop with snap shown in Turquoise (TRQ)





**DK005/P/T**  
**Natural Rise**  
**Pull-on Cargo Pant**  
**XXS-5XL (30")**  
**[P] XXS-3XL (27½")**  
**[T] XS-2XL (33")**

- Contemporary fit
- Elastic waistband with rib-knit
- Seven pockets: patch pockets, back pockets, cargo pockets, accessory pocket
- Utility twill tape instrument loops on cargo pocket
- Signature tonal woven label
- Side vents
- Tapered leg, 15" opening

**Fabric:**  
 95 Poly/5 Spandex Poplin

**NEW this season:**

EGG GRY PAPC

**Available Colors:**

BAPS	CAPS	CIPS	ESP
GAB	GRP	HNPS	HPKZ
NYPS	PWPS	RED	RYPS
TLPS	TRO	WNPS	WTPS



Cargo pocket with instrument loop shown in Wine (WNPS)





## DK625

Mock Wrap Top

XXS-5XL (26")

- Contemporary fit
- Two patch pockets
- Pen slot
- Signature tonal woven label
- Utility twill tape
- Signature logo twill tape at the back neck

### Fabric:

95 Poly/5 Spandex Poplin

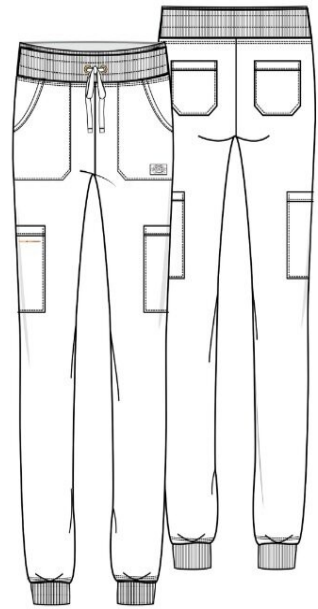
### Available Colors:

BAPS	CAPS	CIPS	GAB
HNPS	NYPS	PWPS	RYPS
TLPS	TRO	WNPS	WTPS

DK625

Mock Wrap Top  
in Ciel (CIE)





## DK065

XXS-5XL (29")

(P) XXS- 3XL ( 26.5")

(T) XS - 2XL ( 32")

### Fabric:

95 Poly/5 Spandex Poplin

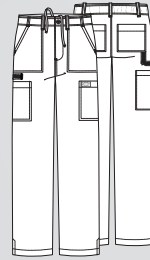
### Available Colors:

BAPS	CIPS	
NYPS	PWPS	RYPS
	WNPS	



DK015  
Drawstring Pant  
shown in  
Espresso (ESP)

featured shoe:  
Infinity Men's  
FLY shown in  
Light Grey Fade/  
White (LGFD)



**DK015/S/T**  
**Natural Rise Drawstring Pant**  
**XS-5XL (32")**  
**[S] XS-3XL (29½")**  
**[T] S-3XL (35")**

- Men's fit
- Back elastic waistband with inside drawstring
- Zip fly with button closure
- Five belt loops
- Six pockets: patch pockets, back pockets, cargo pockets
- Utility twill tape instrument loops
- Signature tonal woven label
- Straight leg, 17" opening

**Fabric:**  
95 Poly/5 Spandex Poplin

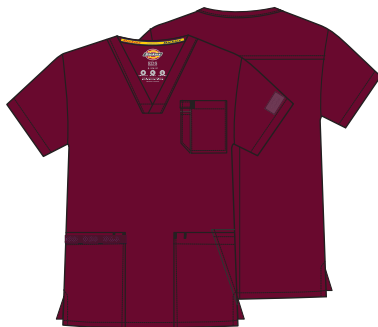
**NEW this season:**

EGG GRY

**Available Colors:**

BAPS†	CAPS†	CIPS†	ESP
GAB	GRP	HNPS	NYPS†
PWPS†	RED	RYPS†	TLPS
WNPS†	WTPS†		

†Available in 6XL



**DK645**  
**V-Neck Top**  
**XS-5XL (29")**

- Men's fit
- Four pockets: patch pockets, chest pocket with pen slot, accessory pocket
- Utility twill tape instrument loops on right pocket
- Signature tonal woven label
- Signature logo twill tape at the back neck
- Side vents

**Fabric:**  
95 Poly/5 Spandex Poplin

**Available Colors:**

BAPS	CAPS	CIPS	GAB
HNPS	NYPS	PWPS	RYPS
WNPS	WTPS		

# EDS<sup>®</sup>

## ESSENTIALS





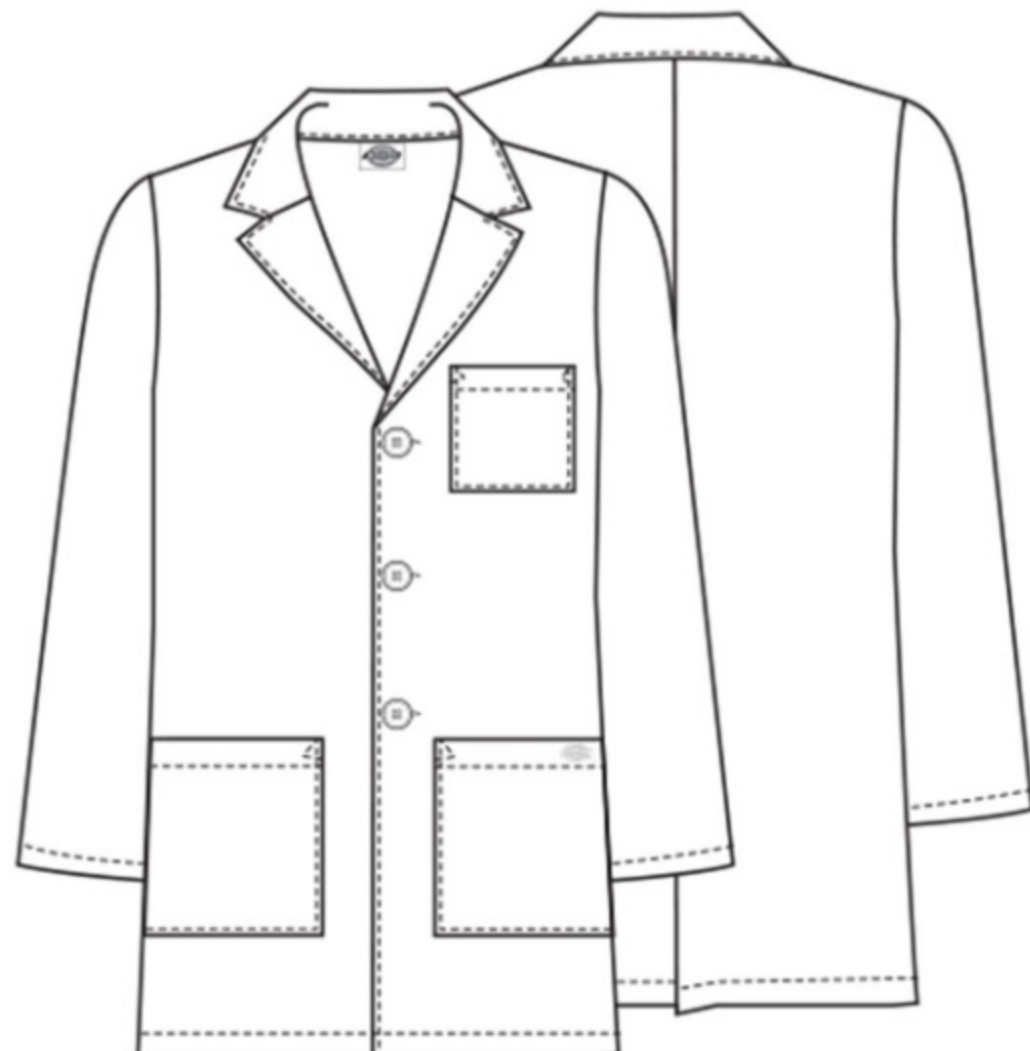
## 28" Lab Coat in White

**Dickies Prof. Whites** 84401 DWHZ



## 30" Lab Coat in White

**Dickies Prof. Whites** 82402 DWHZ



## 31" Men's Consultation Lab Coat in White

**Dickies Prof. Whites** 81404 DWHZ